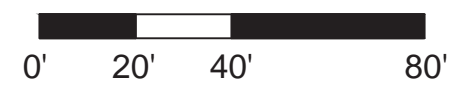
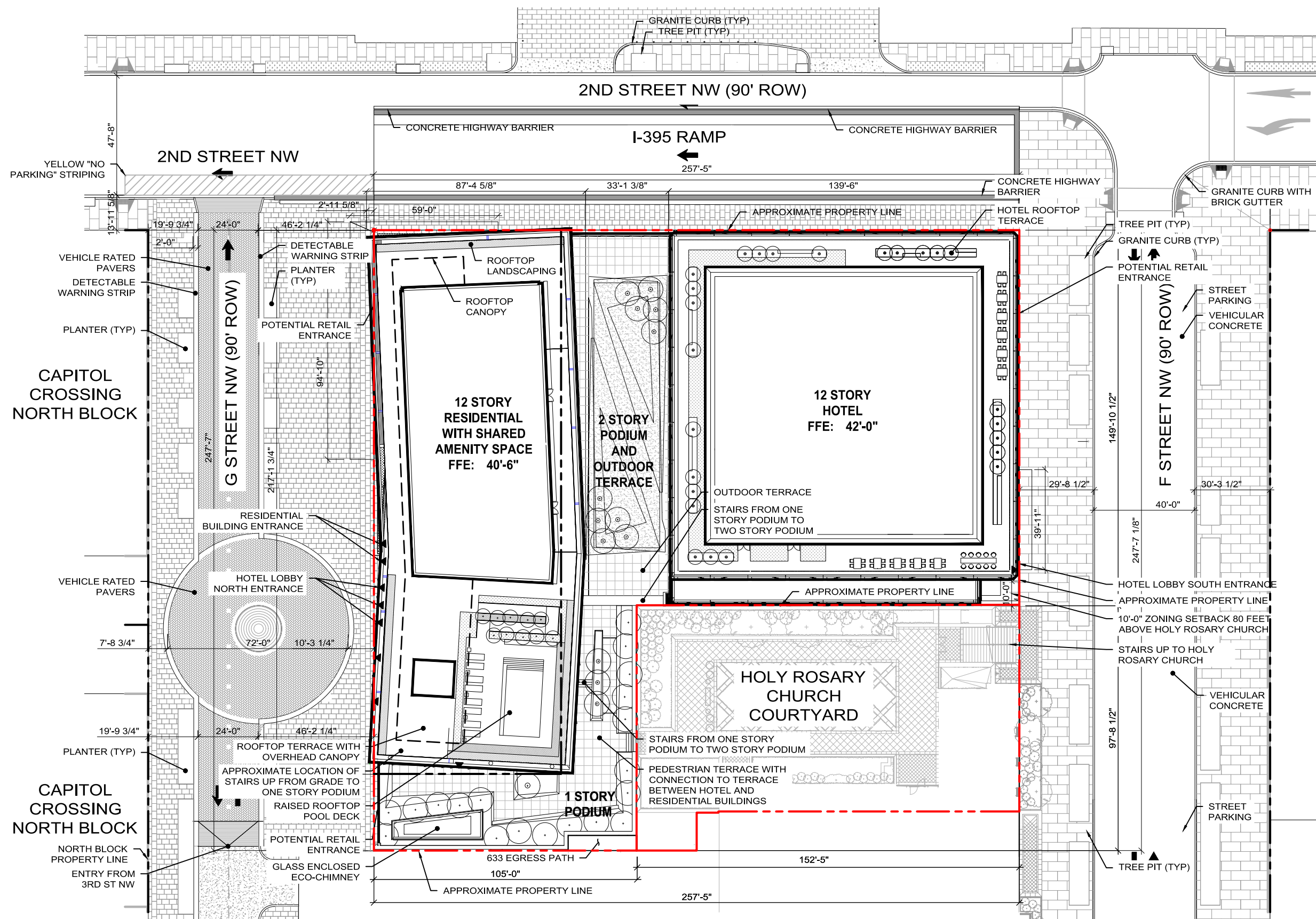


- NOTE:**
- EXISTING CONDITIONS SHOWN ON THESE SHEETS OBTAINED FROM REFERENCE DRAWINGS PROVIDED BY ENNEAD ARCHITECTS. LINEWORK HAS NOT BEEN FIELD VERIFIED.
  - SITE UTILITIES HAVE BEEN REFERENCED FROM A SITE UTILITY PLAN PROVIDED BY ENNEAD ARCHITECTS AND HAVE NOT BEEN SURVEYED.
  - EXISTING SPOT ELEVATIONS OBTAINED FROM A 3D LASER SCAN PRODUCED BY LANGAN IN JULY 2020, WITH REFERENCE TO EXISTING SITE GRADES AND BENCHMARKS.

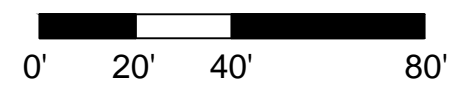


# Existing Site And Utility Plan

PUD Stage II Filing: Capitol Crossing III LLC and Capitol Crossing IV LLC: Square 566, Lots 861-862 (part of Record Lot 50)

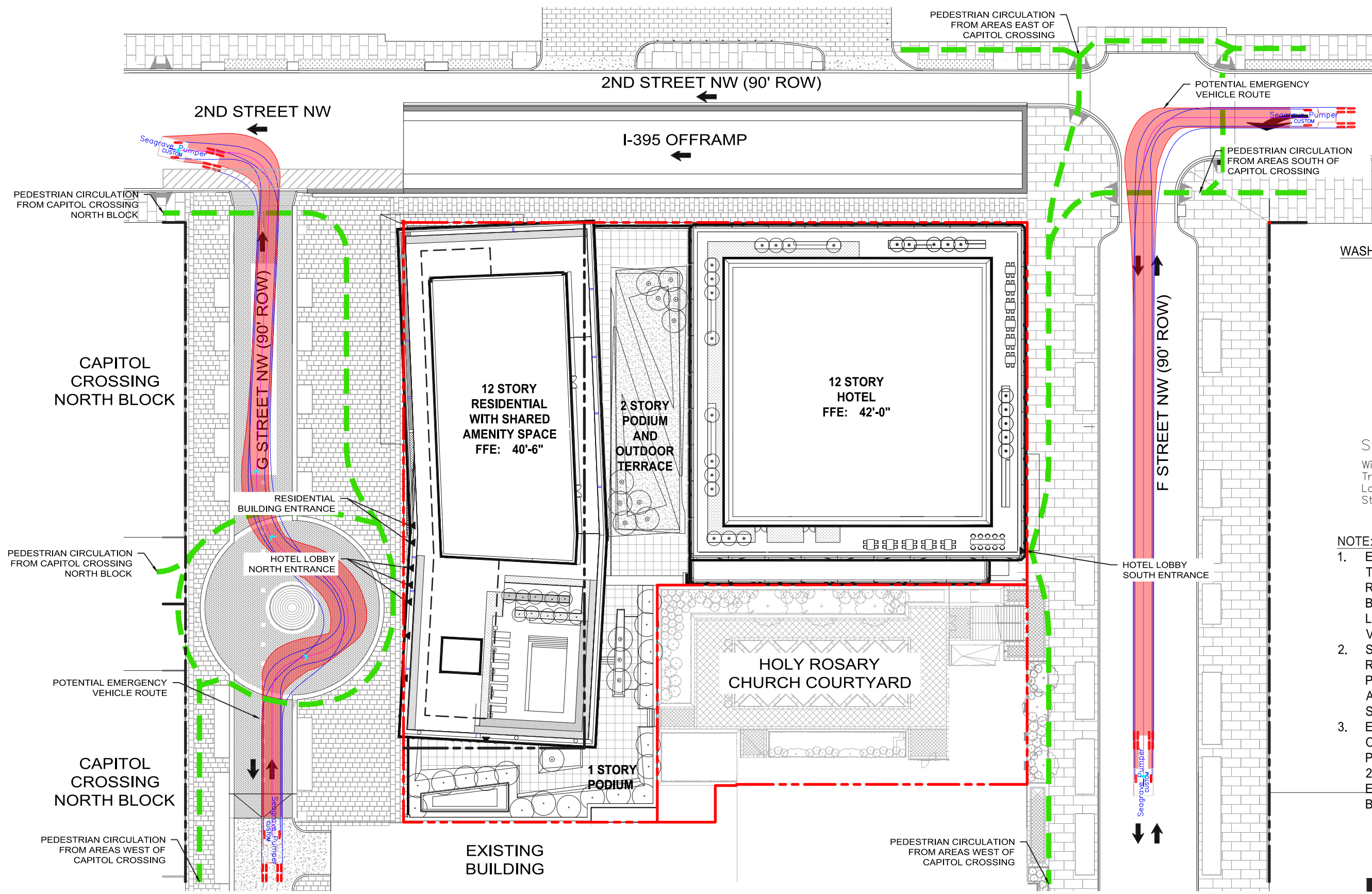


- NOTE:**
1. EXISTING CONDITIONS SHOWN ON THESE SHEETS OBTAINED FROM REFERENCE DRAWINGS PROVIDED BY ENNEAD ARCHITECTS. LINEWORK HAS NOT BEEN FIELD VERIFIED.
  2. SITE UTILITIES HAVE BEEN REFERENCED FROM A SITE UTILITY PLAN PROVIDED BY ENNEAD ARCHITECTS AND HAVE NOT BEEN SURVEYED.
  3. EXISTING SPOT ELEVATIONS OBTAINED FROM A 3D LASER SCAN PRODUCED BY LANGAN IN JULY 2020, WITH REFERENCE TO EXISTING SITE GRADES AND BENCHMARKS.

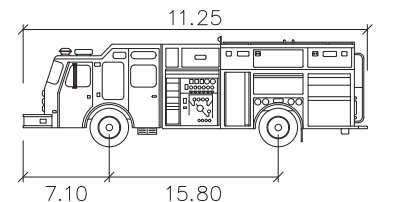


# Civil Site Layout Plan

PUD Stage II Filing: Capitol Crossing III LLC and Capitol Crossing IV LLC: Square 566, Lots 861-862 (part of Record Lot 50)



WASHINGTON DC EMERGENCY VEHICLE  
(FOR REFERENCE ONLY)  
NOTE: NTS



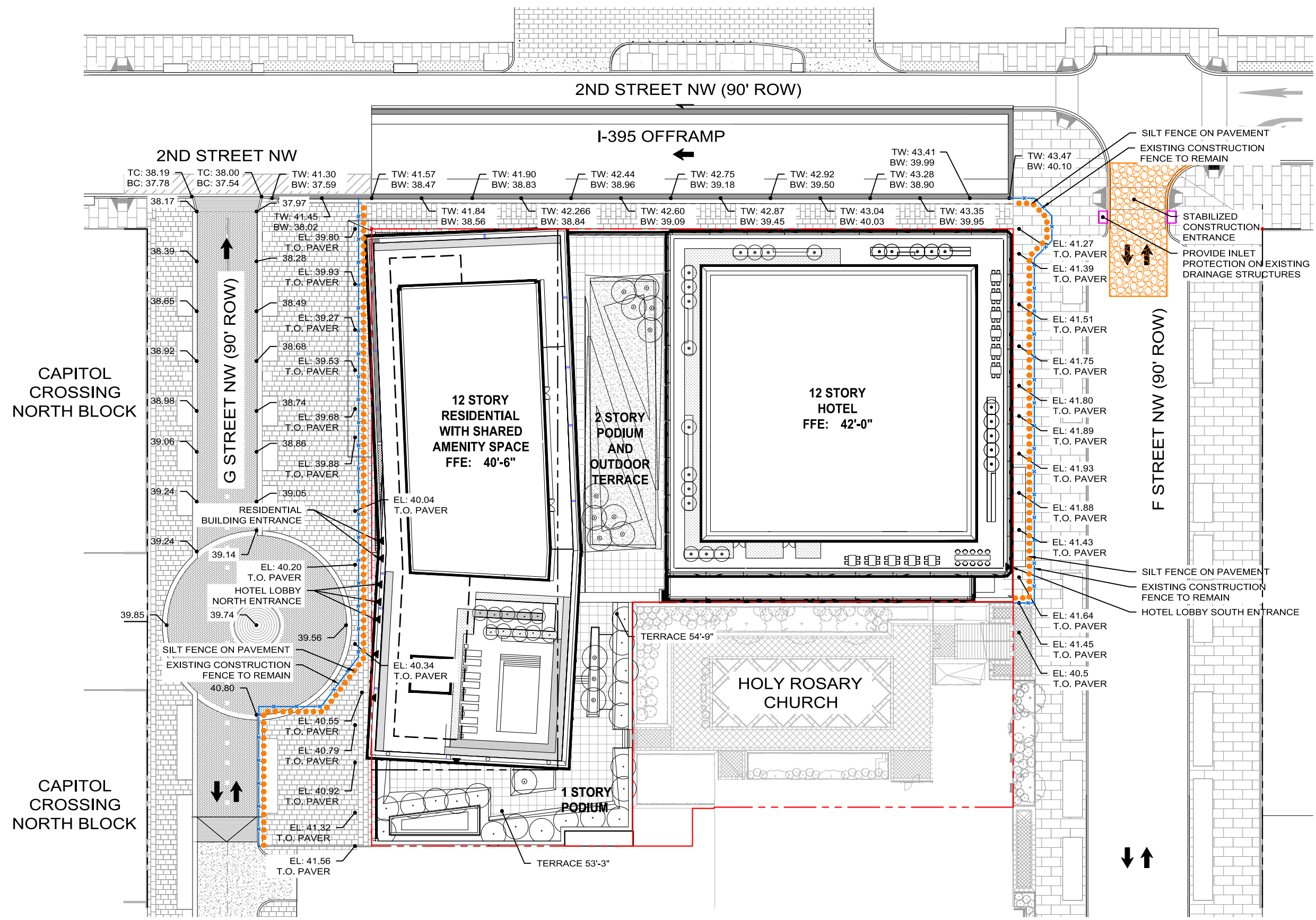
Seagrave Pumper		feet
Width	:	8.00
Track	:	8.50
Lock to Lock Time	:	6.0
Steering Angle	:	40.0

- NOTE:
- EXISTING CONDITIONS SHOWN ON THESE SHEETS OBTAINED FROM REFERENCE DRAWINGS PROVIDED BY ENNEAD ARCHITECTS. LINEWORK HAS NOT BEEN FIELD VERIFIED.
  - SITE UTILITIES HAVE BEEN REFERENCED FROM A SITE UTILITY PLAN PROVIDED BY ENNEAD ARCHITECTS AND HAVE NOT BEEN SURVEYED.
  - EXISTING SPOT ELEVATIONS OBTAINED FROM A 3D LASER SCAN PRODUCED BY LANGAN IN JULY 2020, WITH REFERENCE TO EXISTING SITE GRADES AND BENCHMARKS.

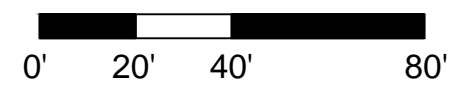


# Site Circulation Plan

PUD Stage II Filing: Capitol Crossing III LLC and Capitol Crossing IV LLC: Square 566, Lots 861-862 (part of Record Lot 50)

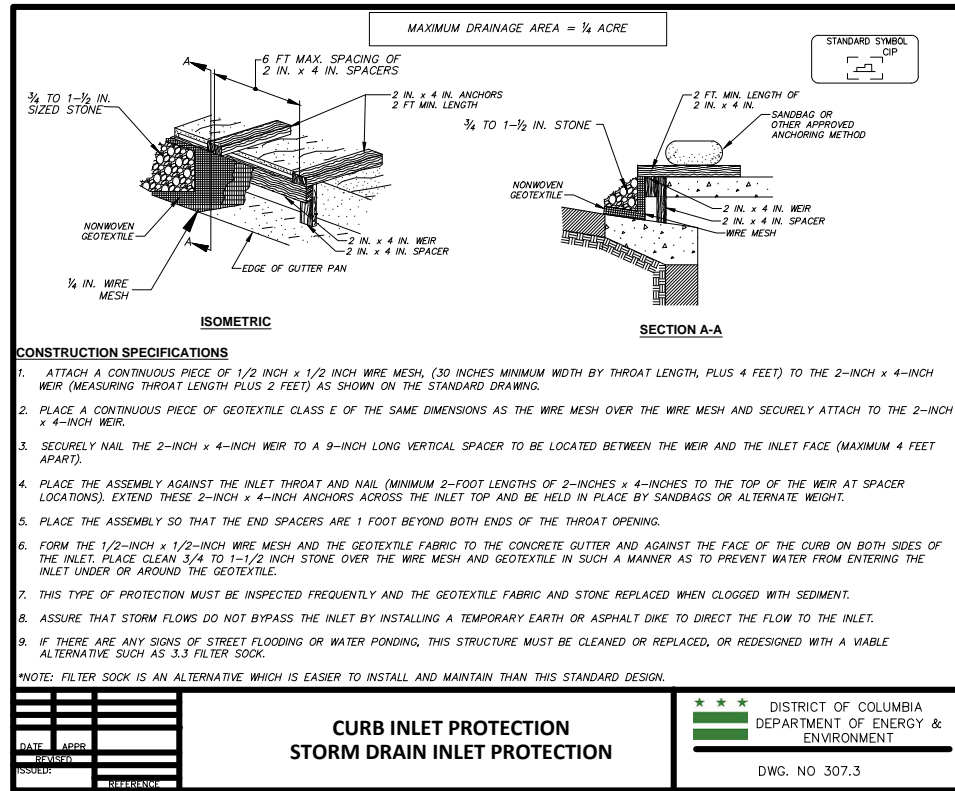


- NOTE:**
- EXISTING CONDITIONS SHOWN ON THESE SHEETS OBTAINED FROM REFERENCE DRAWINGS PROVIDED BY ENNEAD ARCHITECTS. LINEWORK HAS NOT BEEN FIELD VERIFIED.
  - SITE UTILITIES HAVE BEEN REFERENCED FROM A SITE UTILITY PLAN PROVIDED BY ENNEAD ARCHITECTS AND HAVE NOT BEEN SURVEYED.
  - EXISTING SPOT ELEVATIONS OBTAINED FROM A 3D LASER SCAN PRODUCED BY LANGAN IN JULY 2020, WITH REFERENCE TO EXISTING SITE GRADES AND BENCHMARKS.

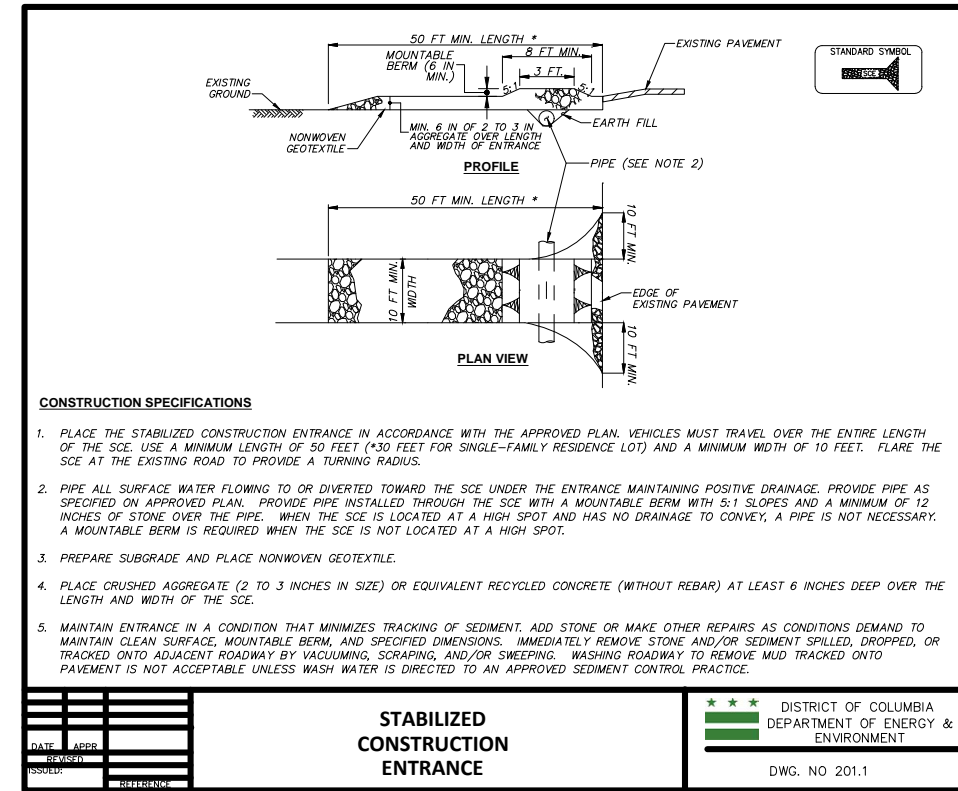


# Site Grading Plan

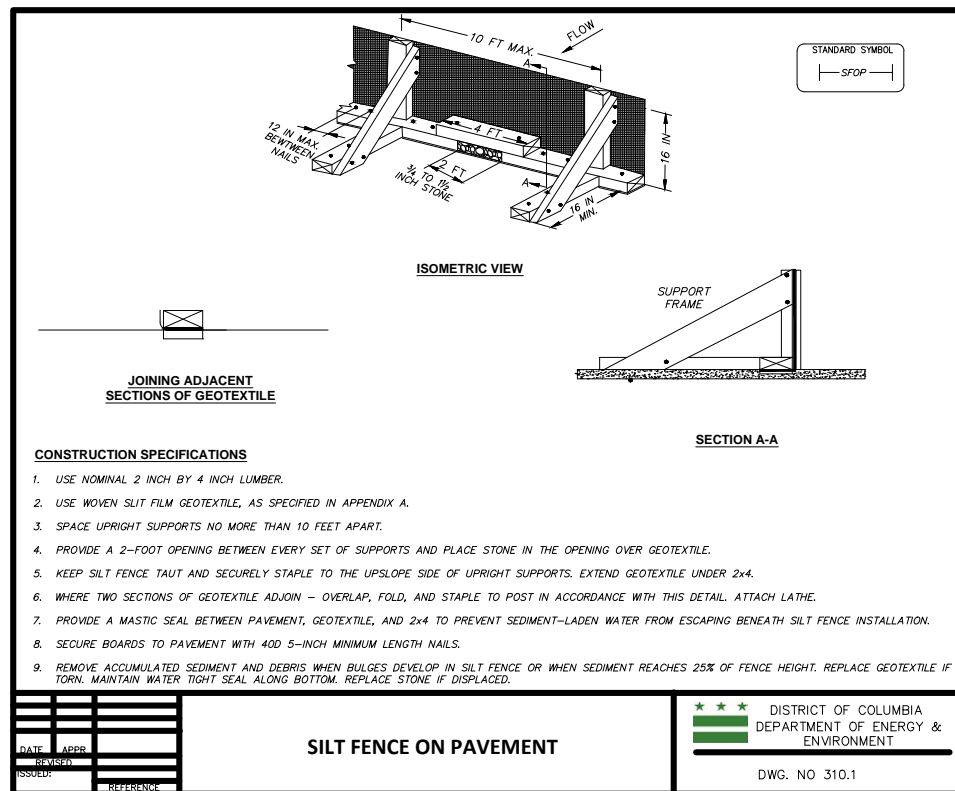
PUD Stage II Filing: Capitol Crossing III LLC and Capitol Crossing IV LLC: Square 566, Lots 861-862 (part of Record Lot 50)



SOURCE: 2011 MARYLAND STANDARDS AND SPECIFICATIONS



SOURCE: 2011 MARYLAND STANDARDS & SPECIFICATIONS



SOURCE: 2011 MARYLAND STANDARDS & SPECIFICATIONS